

The
Baird Family Hospital
and **The ANCHOR Centre**
Project

GRAHAM

NHS
Grampian

PROJECT NEWSLETTER

ISSUE 23 March 2023

Contents

Project Update - 1

Site Progress - 2

A Look Forward to The Baird Family Hospital - 6

Commissioning Update - 7

A Focus on Women's Health Research – 9

Baird and ANCHOR Arts Project - 10

PROJECT UPDATE

Jackie Bremner, Project Director



Welcome to the March 2023 newsletter. Construction work on both developments continues to progress with the external works on ANCHOR nearing completion and most of the focus on internal fit out works. At The Baird Family Hospital the external works are progressing well and are visible as you make your way along Westburn Road. Work to erect the internal partitions is now well underway along with the mechanical and electrical installation.

In April 2023, the Board of NHS Grampian will receive an update on The Baird Family Hospital and ANCHOR Centre project. This will include details of anticipated delay to both buildings' completion.

The Baird Family Hospital and ANCHOR Centre are the biggest capital construction projects NHS Grampian has ever undertaken. The project team's focus is to ensure that these wonderful new buildings are able to support the highest standards of care from the point of opening.

Regrettably, several factors including market conditions, updated assurance processes and client changes have impacted on the construction of both facilities, to the point that their completion and opening will now be delayed.

Construction of both buildings continues to make good progress. The project team are working closely with NHS Scotland Assure and other key stakeholders to ensure these complex, modern facilities will meet the needs of the population of the north east and northern isles, when they open their doors to patients.

A crucial element of any large capital project is the ongoing review and refinement of the agreed design, in particular the mechanical, electrical and infection prevention compliance aspects. Internal and external experts guide this process, which is independently reviewed through the National Design Assessment Process (NDAP) and the Key Stage

Assurance Review (KSAR) process led by NHS Scotland Assure.

We will always welcome any changes that lead to a more robust process and a safer clinical environment in our buildings. Whilst the slippage of time is disappointing, it is, without doubt, the right thing to do. The project team is working hard to quantify the potential time and costs attached to this. This will take some months to complete.

I look forward to providing a further update on progress in the next edition of this newsletter.

Please follow our project on Social Media for our latest news and opportunities to get involved – and invite your friends to like our pages too!



@bairdanchor



@bairdANCHOR



@bairdANCHOR

Dedicated project website available at www.bairdanchor.org or email the team at gram.bairdandanchor@nhs.scot

BAIRD AND ANCHOR SITE PROGRESS

Technical Team

Despite changeable weather conditions, the last quarter has seen steady progress made to both Baird and ANCHOR buildings.

The Baird Family Hospital external envelope which mainly comprises of an insulated render is progressing well despite the time of year where application of the render system is largely dictated by the outside air temperature, which must be above 5°C before the render can be

applied. The external wall insulation systems dramatically cuts energy loss by wrapping the building in a thermally resistant envelope, helping to reduce energy consumption and CO2 emissions, as well as providing lasting protection for

the fabric of the building. Since the last newsletter the generator housing, which is located to the north east of the site, has been completed. This was the very last of the concrete pours. This is another significant project milestone which has been reached this quarter, to the delight of both the NHS Grampian technical team and GRAHAM Construction.



Baird east elevation – cement particle board nearly complete, taped and sealed in preparation for insulation followed by render. Concrete Generator Housing in foreground.



Baird south elevation facing Westburn Road – mineral insulation and scratch coat render is ongoing.

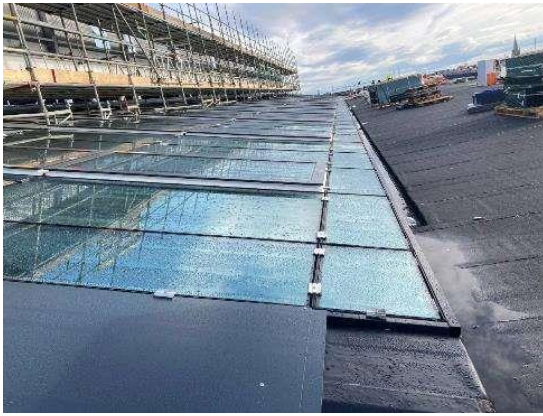


Baird west elevation (main entrance) facing Foresterhill Road – second/final coat render ongoing. Notice also the crane in action lifting an air handling unit into place on the rooftop plantroom.



Baird south east elevation facing Westburn Road – cement particle board (CPB) installed, sealed and taped (red squares) in preparation for insulation followed by render.

Recent spells of extremely low temperatures (experienced in early March), where temperatures dropped to as low as -7°C overnight (on site), has resulted in most areas of the roof having to be temporarily closed to access due to ice /snow build-up. Notwithstanding, the huge expanse of glazing over the Baird atrium is almost complete and when fully finished will mark another major project milestone which will see a significant push in the internal fit out works which are reliant upon achieving water tightness.



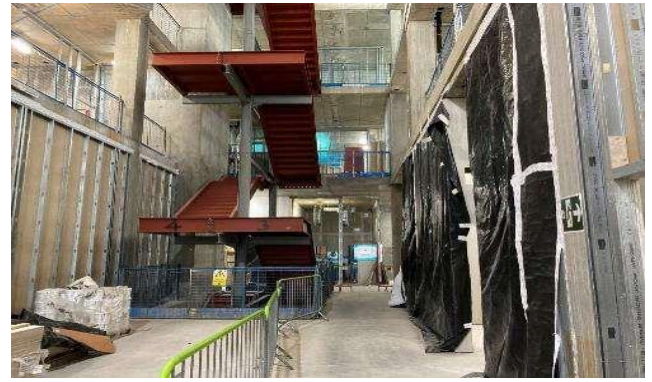
Baird Atrium Roof light – glazing nearing completion – scaffolding due to be dismantled later this month.

The new link bridge is nearing completion externally with only a few of the window reveal and cladding panels remaining to be fitted.

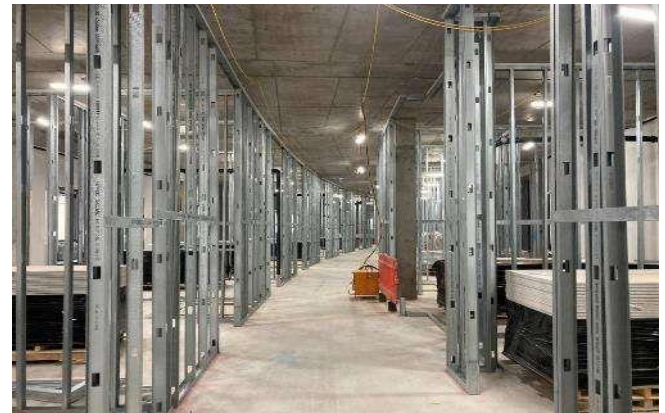


Baird north - new link bridge joining The Baird Family Hospital to Aberdeen Royal Infirmary (ARI) and Royal Aberdeen Children's Hospital (RACH).

The Baird internal fit out is advancing well with stud partition /drylining ongoing on the ground to second floors with rooms and corridors taking shape. The mechanical first fix is ongoing on the Lower Ground Floor.



Baird – Atrium / feature Stair



Baird – metal stud partition erection progressing

The electrical first fix and M&E module installation is progressing on the Ground Floor.

The sample (birthing) room is nearing completion and will shortly be the subject of scrutiny for NHS Grampian clinical and support staff who have been invited to appraise and provide feedback to ensure the space and finishes meet the operational requirements and quality standards expected.

The ANCHOR Centre external rendering is now complete with exception of the window reveals and ground level soffits which has been delayed as a result of sub-zero temperatures experienced in early March.

The impressive rain screen wayfinding feature tower has now been installed to the east elevation adjacent (south) to the main entrance. Its caramel oak finish complements the white and blue *Sto* render system on the curve and as was intended will serve as an attractive and distinctive wayfinding aid for patients attending The ANCHOR Centre.



The ANCHOR Centre – east elevation (main entrance)

The roof is complete with the exception of the installation of louvre panels which will provide an enclosure for the air handling plant which as well as extending the lifecycle of the plant will provide a weathered enclosure for ease of maintenance.

This progress will make way for the installation of the solar PV panels which are destined for the south end of the flat roof.



The ANCHOR Centre west elevation - A "bird's eye" view of

The hard landscaping to the east of the site is ongoing. The first of the tarmac and paving slabs are in the process of being laid and it is now possible through the site mud to envisage how the car park and main entrance are going to look.



The ANCHOR Centre south elevation - ongoing road formation, landscaping and groundworks to the south and east of the site.

The ANCHOR Centre internal fit out is progressing with pace. The Lower Ground Floor is at the most advanced stage, where flooring, ceilings, wall finishes, fitted furniture, IPS systems, services and painter work are nearing the snagging phase.

Ground and first floors are not far behind with some areas also nearing completion.

There has also been significant progress made in the Aseptic Suite in the last quarter where the walls, floors and ceilings have been finished and the installation of fitted furniture has commenced.



The ANCHOR Centre – Lower Ground Floor Aseptic Suite Outer Support Room

The ANCHOR Centre Ground Floor south; see photo below - typical consulting room. The photo does not do the interior design scheme any justice since the wall protection (blue), IPS unit (red blotches) and flooring still have protection material applied to prevent damage occurring during the final stages of completion.



The ANCHOR Centre Ground Floor south – typical consulting room.

A LOOK FORWARD TO THE BAIRD FAMILY HOSPITAL

Geraldine Fraser, Integrated Families Portfolio Executive Lead

Having recently taken up post as Portfolio Executive Lead for Integrated Families, with a remit for maternity, children's and women's health services in Grampian, I have been following the progress of the Baird and ANCHOR projects with keen interest. Whilst ANCHOR will provide much needed outpatient facilities for oncology, haematology and pharmacy, The Baird Family Hospital will offer state of the art facilities for maternity, neonatology, breast, gynaecology, and reproductive medicine services. The new facilities will greatly benefit our families who access all these services in Grampian and beyond, and it will give us the opportunity to deliver high quality services with the best resources available to families, and to staff.

I recently was fortunate to be offered the chance to see round the Baird building, and was taken aback by the scale of the hospital. It's clear that there has been a huge amount of thought and careful planning into the design and I was impressed with the layout and set up. All bedrooms are single and en-suite, and there is space for separate areas for induction, transitional care, large family rooms for parenting skill development, and additional theatre capacity. I was hugely impressed with the scale of the building which will have over 1000 rooms. I know our teams are working hard on service redesign arrangements for how we can best utilise the new space when we move in. I have no doubt that this will be a great asset for delivering modern, high quality healthcare services for families, and

provide an enhanced experience for everyone that comes to hospital here, and for our valued staff.

The Project Team are doing an excellent job in managing the developments for both Baird and ANCHOR, and I know how much they also value the input and design work that services are doing which is so essential for planning for the moves. I'd like to offer my personal thanks for the significant time and effort to help advance progress and for everyone's hard work and commitment.



From left to right Geraldine Fraser, Integrated Families Portfolio Executive Lead, Sue Swift Divisional General Manager (Integrated Families) and Gail Thomson, Deputy Project Director.

COMMISSIONING UPDATE

Commissioning Team

The project team are currently working to finalise commissioning plans for Baird and ANCHOR with the primary focus on ANCHOR at present. There are many streams of work and meetings ongoing and we are pushing ahead to have the plans completed and agreed ASAP. Please see the updates from some of the work streams below.

Equipment

There's a lot going on when it comes to equipping the new facilities. Our first drop of Group Two equipment for ANCHOR will arrive onsite this week. This includes commodities such as hand gel dispensers and other components that the contractors will fix to the wall surfaces. Work is ongoing with focus groups for Group Three equipment for ANCHOR – this group of components are best described as free-standing. We do have some items transferring from the current areas and these have all been labelled ready for their new home. When selecting the appropriate new equipment we have had input from

different stakeholders across NHS Grampian including Facilities Management, Catering, Domestic Teams, Nursing Teams to name but a few. Third sector parties are also involved in the selection process.

ANCHOR Treatment Area Furniture - All furnishings will be colour-matched to align with our Interior Design and Art Strategies. Each chair cluster will have three or four treatment chairs, an equipment trolley plus a seat for the member of staff working in that area.



One of our fabulous staff nurses demonstrating the chosen Therapy Chair for our Treatment Area. After a long and robust trial period of chairs available on the market which included feedback from patients, staff, stakeholders and third sector parties this chair ranked first. The chair is compliant with our essential specification and will also have a USB port which will allow patients' to have the ability to charge their devices whilst receiving treatment. The enhanced comfort, functionality and aesthetic of the chairs is possible due to funding from the "Delivering the Difference" Campaign led by Friends of ANCHOR.



Each cluster of treatment chairs will have an equipment trolley to ensure members of staff have all the equipment required at hand when tending to their patients. These will have a flip-up shelf on one side plus a holder for sharps bin on the other.



An example of the type of chair for the member of staff working in this area. Colours are for demonstration purposes only.

Work is ongoing with several systems within the new facilities such as nurse call and phones to ensure that when the move

takes place everything is up and running and suitable for service requirements. Whilst it sounds like all focus is on ANCHOR, work also continues in the background for The Baird Family Hospital.

Fire, Security and Continuity

There has been a lot of discussion at the group looking at how we take control of the facilities and make sure NHS Grampian policies are implemented ensuring our facilities are compliant with legislation and guidance. We are commencing work looking at the fire evacuation strategy that will help us in developing our fire plans for departments.

This work will be extended to include all our stakeholders in table top exercises. All staff based in the new facilities will be a part of staff orientation and have the opportunity to take part in these exercises.

Work is also ongoing looking at our security arrangements for the new buildings and will look at how we ensure the site is secured from handover whilst we move through the functional commissioning phase readying the buildings for occupation. In this we will look at working with partners to secure the buildings after the contractor has handed the buildings over to us.

Soft Facilities Management

Our Soft FM group brings together expertise from domestics, catering, waste management and linen services. All provide a vital link in how we deliver services from the building. We are keen to establish how these services will interact and work together with one another to support the smooth operation of The ANCHOR Centre.

Work is ongoing for both Baird and ANCHOR but at the minute with The ANCHOR Centre closer to commissioning we are primarily focusing there.

Our initial two meetings focused on confirming our existing Non Clinical Briefs. These dictate the scope of the service required and how that will be delivered in the new facilities. There had been a lot of work carried out to develop these briefs previously and with the group meeting again we are confirming they will meet the needs of the service.

Migration and Policies

The migration meetings continue and we have made progress on agreeing how the service will move from their current areas to The ANCHOR Centre. We are working well as a group to cover all aspects of the move and we have had very productive interaction with service colleagues. The next migration meeting will focus on the pre-functional and functional commissioning activities required to be carried out and completed to ensure everyone and everything is prepared for opening The ANCHOR Centre. Policies will also be discussed this month with a lot of work ongoing in the background to complete this complicated task.

A FOCUS ON WOMEN'S HEALTH RESEARCH

Fiona Shedden, Communications and Marketing Manager, University of Aberdeen

Aberdeen has long been a place where women's health research has been a focus, building on the legacy of one of the University's most illustrious pioneers, Sir Dugald Baird who was appointed Regius Professor of Midwifery in 1937. Sir Dugald was instrumental in transforming clinical practice, service provision and health policy including reproductive health, perinatal and maternal mortality, social obstetrics and cervical screening. Researchers at the Aberdeen Centre for Women's Health Research are ensuring they remain at the forefront of efforts to improve outcomes and experiences of women at all stages of their lives. This 'life course' approach allows clinicians to address events at different stages of life that can become serious and full-blown medical conditions if not pre-empted or treated early.

Research areas where the University of Aberdeen has led the way include fertility and maternal health. Aberdeen's high-quality programme of research over several

decades has aimed to improve understanding of complications of pregnancy, from early pregnancy loss through to pre-eclampsia, preterm birth, stillbirth and intervention in labour. Local and national databases – including the Aberdeen Maternity and Neonatal Databank initiated by Sir Dugald Baird in 1951 - have aided research into the long-term effects of these problems. The work has influenced both advice given to women and care provided to improve health outcomes.

Recently Aberdeen researchers, in collaboration with clinicians, members of the public and those with lived experience of childbirth, began looking into how pregnant women can be supported to plan their birth. With the support of external funding, the team will develop an aid that can be used to guide discussion between pregnant women and health professionals during antenatal appointments. Ultimately the goal is to develop a decision aid that will

help pregnant women make an informed choice between vaginal or caesarean birth.

Widely used in healthcare settings already, such as in choosing between cancer treatments, decision aids provide a framework for discussion and have been shown to increase knowledge, support choice and reduce regret. No aid like this currently exists for birth planning in routine maternity care. The project will address this gap to enable maternity staff to conduct balanced conversations with women about their birth plan options. [Watch the video to find out more>>](#)

Contact Kelly M Anderson, lead medical fundraiser, to find out more about how you can help support women's health research at the University of Aberdeen at kellymanderson@abdn.ac.uk or +44(0)1224 273057.



It was great to host The ANCHOR Centre artists in February for their stakeholder engagement sessions. These sessions were specifically tailored to ensure the artists come away with the information they need to start the design stage of their process. We would like to thank all the staff and patients who helped us with these sessions on wards 307-310, radiotherapy and radiology, and all the stakeholders who came along to the sessions held in The Suttie Centre, Rosemount Community Centre and CLAN.

Courtyard commissioned artist Rachael Champion, interior artworks commissioned artists Mark Nixon and Viliina Koivisto from NEON Studio and atrium and external artworks commissioned artist Paula Thompson, created a variety of creative activities ranging from the use of 3D materials and clay, stickers and colour

swatches to create your own mood board, as well as questionnaires.



Participants sharing ideas of what they would like to see in The ANCHOR Centre courtyards

Here are some examples of the feedback from staff and patients about what they would like to see:

Courtyards

'Privacy, peaceful, visual experience, a space separate from hospital traffic, facing Westburn Road with lots of sun' Member of staff

'Lots of green gives you a feeling of hope' Patient

'Just to have some outdoor spaces would be amazing!' Member of Staff

'Peace and quiet, away from the hustle and bustle. I really like the cabin space in the Staff Garden.' Member of Staff

Interior Artworks

'References to fishing, castles, distilleries, site specific, herring industry, papermill.' Patient

'Soft colours, heritage, fishing industry and rural industry forms and visuals. Inspiration from the Aberdeen & Aberdeenshire landscape' Patient

'Bright colours, artworks that evoke conversation. The space to feel open with visual stimulation' Patient

'Less clinical and natural style. A change of feeling and texture in the new spaces, homely and welcoming. Artwork should be considered and integrated' Member of Staff

'Positive and friendly artwork that makes everyone feel proud to be in the new building' Member of Staff

You can find out more about The ANCHOR Centre artists on the GHAT website:

NEON Studio <https://www.ghat-art.org.uk/meet-the-artist-neon/>
Racheal Champion <https://www.ghat-art.org.uk/meet-the-artist-rachael-champion/>

Paula Thompson <https://www.ghat-art.org.uk/meet-the-artist-paula-thompson/>